

# Whitechapel Gallery Easy Read Guide

## Contact Information

Phone Number: 020 7749 1240

Website: <https://www.whitechapelgallery.org/>

Email: [infodesk@whitechapelgallery.org](mailto:infodesk@whitechapelgallery.org) or  
[access@whitechapelgallery.org](mailto:access@whitechapelgallery.org)

Address: Whitechapel Gallery  
77-82 Whitechapel High Street  
London  
E1 7QX

This is an Easy Read Guide to the Whitechapel Gallery. The purpose of this guide is to give you a clear picture of what to expect when you come to visit the gallery. This guide uses simple words in short sentences, with pictures to help explain the words.

## In this Guide

1. [Getting to the Whitechapel Gallery](#)
2. [Gallery Opening times](#)
3. [Booking tickets](#)
4. [What to expect when you arrive](#)
5. [Accessibility at the Whitechapel Gallery](#)
6. [Safety measures](#)
7. [Venue access](#)
8. [Evaluation and feedback](#)

## 1 – Getting to the Whitechapel Gallery

Our nearest train/tube station – Aldgate East Underground (0.2 mile or 1 min walk) is not wheelchair accessible. The closest wheelchair accessible stations are Whitechapel (0.5 mile or 10 min walk), Shoreditch High Street (0.7 mile or 15 min walk) or Liverpool Street (0.6 mile or 15 min walk).

Buses: The 25, 205 and 254 stop outside the gallery. The 15, 115, 40, 42,45 and 67 buses stop outside Aldgate Station. The 35, 43,78,149, 242, 344 and 388 stop on Commercial Road. The 242 and 253 stop outside Liverpool Street Station.

Please contact Transport for London for updated travel advice: [tfl.gov.uk](http://tfl.gov.uk).

We are happy to meet visitors with access needs at a station and walk with you to the Gallery. To organise this, please call: 020 7522 7888.

Free parking for Blue Badge holders is available at the top of Osborn Street in the pay and display booths for an unlimited period. Spaces are available on a first come, first served basis.

Our entrance is at street level and is non-stepped.

Front view of the entrance to the gallery next to Aldgate East Station.



## 2 – Gallery Opening Times

Monday	CLOSED
Tuesday	11am-6pm
Wednesday,	11am-6pm
Thursday	11am-9pm
Friday	11am-6pm
Saturday	11am-6pm
Sunday	11am-6pm

### **3 – Booking Tickets**

The Whitechapel Gallery's displays, commissions and archive galleries are free and open all year round, six days a week. Throughout the year the Whitechapel Gallery has two ticketed exhibitions to support its Exhibition and Education programmes.

Tickets may be bought online through our website:

<https://www.whitechapelgallery.org/>

Alternatively, you may ring the info desk to purchase your ticket: 020 7522 7888

You are also welcome to turn up on the day and purchase your ticket at the ticket desk.

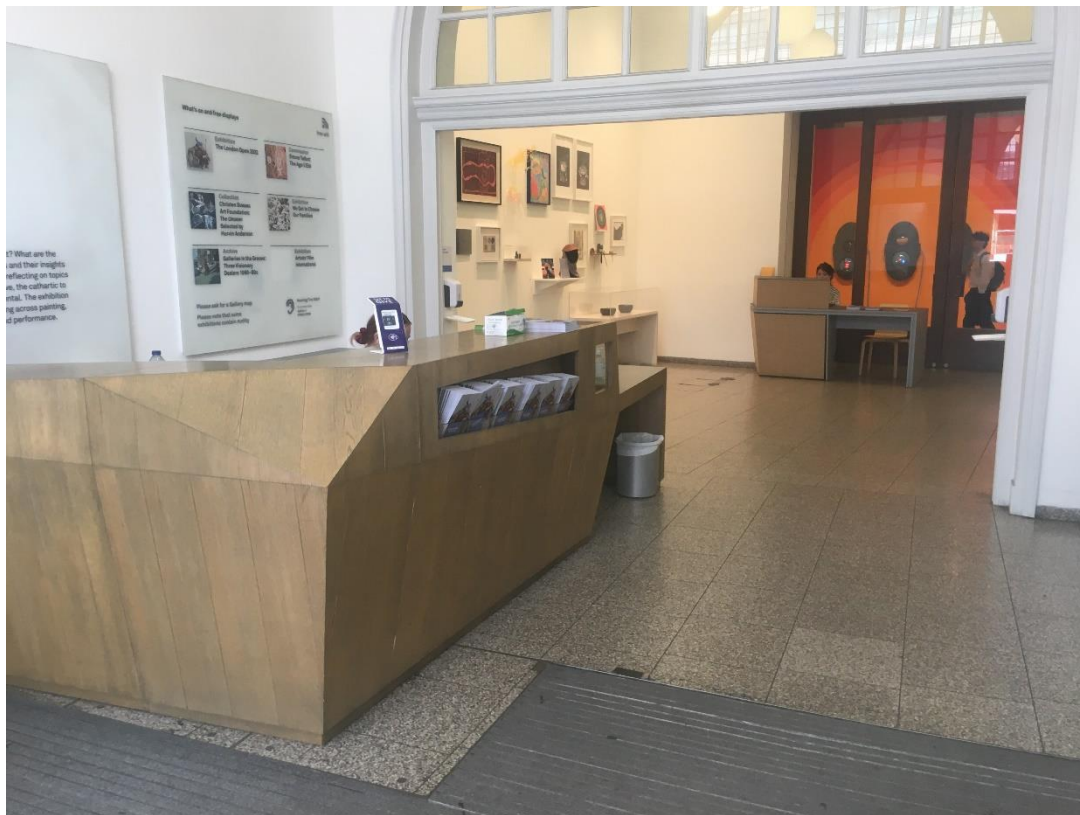
Group bookings of up to 15 people can be made via the following link: <https://www.whitechapelgallery.org/visit/group-visits-tours/>

### **4 – What to expect when you arrive**

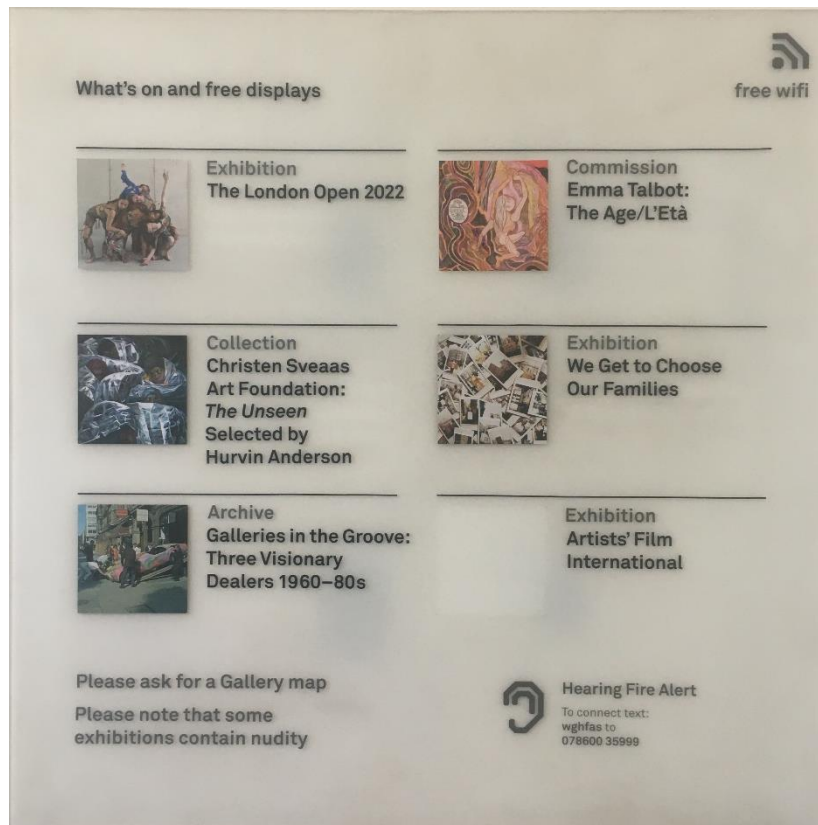
As you walk through the glass doors, you will see the Info desk on your left.

Dimensions: Height: 208cm | Width: 260cm | Depth: 210cm

**This is the Info desk.**



Upon arrival, you will be greeted by one of our friendly Visitor Services Assistants who will help you with your visit. A large board hangs on the back wall which displays all of our current exhibitions.



**This is the display board.**

If you wish to see a paid show, our Visitor Services Assistants will guide you to the Ticket Desk.

This is located in front of the double doors to Gallery 1.



**This is our ticket desk.**

Dimensions:

Height: 109cm

Width: 163cm

Depth: 76.5cm

One of our Visitor Services Assistants will help you with your ticket. Please note that we do not take cash and only card payments can be accepted.

Before you enter our galleries, you may want to see the bookshop. It is located in the foyer, diagonal to the ticket desk.



**This is the bookshop.**

To enter Gallery 1, go through the double doors by the ticket desk.





These are the doors to Gallery 1.

Gallery 1 is a large, square room with high ceilings and lots of light.



**This is Gallery 1.**

At the end of Gallery 1, you will reach a set of stairs on your left.



At the top of the stairs, turn right. This will bring you to Gallery 9.



**This is Gallery 9.**

Gallery 9 is a medium sized, rectangular room, with high ceilings and a low light.

At the end of Gallery 9, you will reach a set of double doors to exit. Push these doors open to enter Gallery 8.



**This is Gallery 8.**



Gallery 8 is a large rectangular room with high ceilings and lots of light.

At the end of Gallery 8, you will reach a set of double doors on your left.



Exit through here. This will take you to galleries 5 & 6.

If needed, there is a lift located on the right-hand side of the stairs.



To enter Gallery 5, walk down the stairs on the left.





**These are the stairs.**

There is another lift at the bottom of the stairs, on the right.



These are Galleries 5 & 6.





## **This is Gallery 5.**

Gallery 5 is a small, square room with medium height ceilings and a table in the centre of the room. At the end of Gallery 5, you will enter Gallery 6.



## **This is Gallery 6.**

At the end of Gallery 6, you will find a set of double doors. This will lead you into Gallery 7.

Push the double doors open to enter.



**This is Gallery 7.**

Gallery 7 is a medium sized room with high ceilings and lots of light.

To exit Gallery 7, walk out the double doors from which you entered and walk into the middle of Galleries 5 & 6.

On your left there is a door to exit. This will take you to a stairwell to go downstairs to Gallery 4.



**This is the door.**



**These are the stairs.**

At the bottom of these stairs are glass doors.



**These are the doors to Gallery 4.**

Gallery 4 is a small, square room with low lighting.



**This is Gallery 4.**

On the right-hand side of the gallery, you will see the Foyle Reading Room.

The Foyle Reading Room is the Whitechapel Gallery's dedicated space for research.



**This is the Foyle Reading Room.**

This is a space to access our archives. Any member of the public can request to see the Whitechapel Gallery archive. You can make a request by emailing [archiveenquiries@whitechapelgallery.org](mailto:archiveenquiries@whitechapelgallery.org)

To leave Gallery 4, exit through the double doors from which you entered.

There is a lift on your left.



This is the lift.

You can use this to go downstairs to the ground floor.  
Alternatively, you can take the stairs.

## **Stairs**

Once you walk through the double doors, turn right and head down the stairs.





**These are the stairs.**

At the bottom of the stairs you will see the cloakroom directly ahead of you.



**This is the Cloakroom.**

Our cloakroom is free of charge, but we do welcome any donations that you are able to give.

You can donate at one of our donation points. These are located at the Info Desk and the Cloakroom.





This is an electronic donation point.

This is a cash

donation point.

To make an electronic donation, tap your payment card on the screen. Alternatively, we accept cash donations, shown above, right.

There is a glass donations box opposite the cloakroom.

At the bottom of the ground floor stairs, you will find the doors to Gallery 2.

Push them open to enter the gallery.



**This is Gallery 2.**

Gallery 2 is a large square room with high ceilings and low lighting. At the end of Gallery 2 you will see a corridor on your left.

**This is the Corridor Vitrine.**



The Corridor Vitrine is a narrow corridor with archive material displayed in glass display boxes on the walls. At the end of the corridor, you will see the Zilka Auditorium on your left.

**This is the Zilka Auditorium.**



It is a medium sized room with comfortable seating. A large screen at the back of the room displays films from our exhibitions. To find out what film is showing, please ask at the Info desk.

To exit, head back through the Corridor Vitrine and through Gallery 2. This will take you back to the foyer.

Our disabled toilets are located opposite the stairs.



**These are the disabled toilets.**

There are more toilets downstairs.



**These are the downstairs toilets.**

At the end of the gallery on the ground floor, you will see the Townsend restaurant on your left.





**This is the Townsend restaurant.**

### **Opening Times**

**Monday: Closed**

**Tuesday: 10.30am – 6pm**

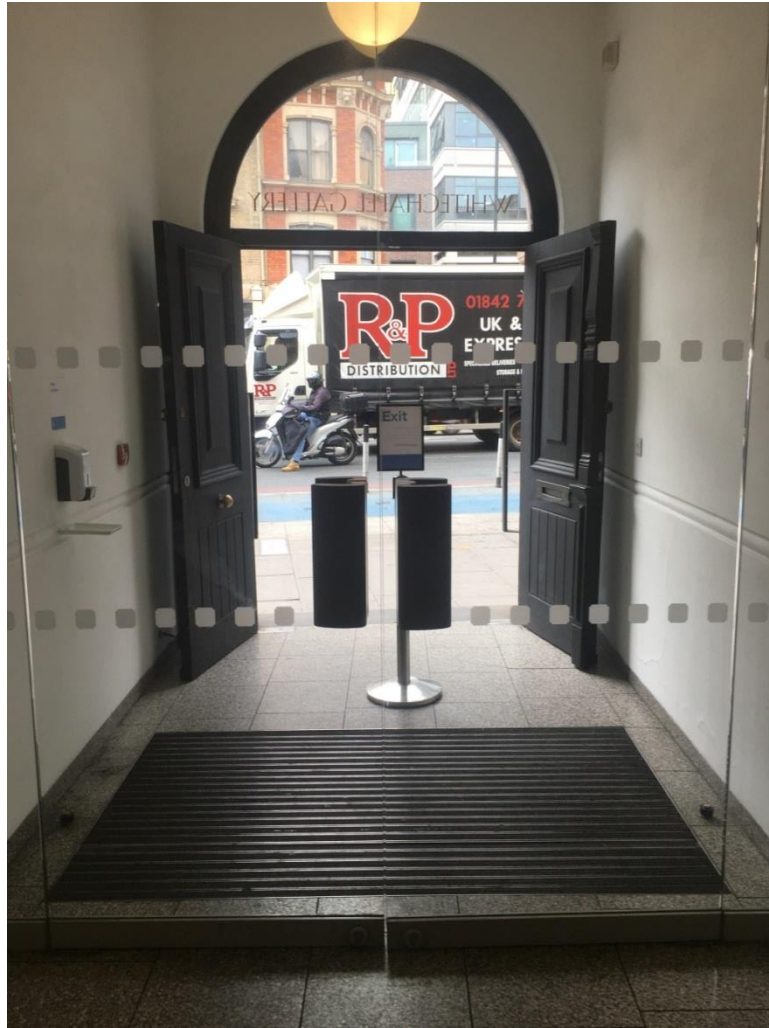
**Wednesday – Friday: 10.30am – 11pm**

**Saturday: 10am – 11pm**

**Sunday: 10am – 6pm**

Booking in advance is advised but we will always do our best to accommodate walk-ups.

To leave the gallery, exit through the glass double doors.



These are the glass doors.

## **5 – Accessibility at the Whitechapel Gallery**

### **Borrowing wheelchairs & seating**

Wheelchairs are available on request at the Information Desk.

Portable folding chairs are available from the Cloakroom Desk.

### **Assistance Animals**

Guide dogs, hearing and registered assistance dogs are welcome. Staff can provide a bowl of water. If you want to bring your guide or hearing dog to an event in the Zilkha Auditorium, please call +44 (0)20 7522 7888 in advance to reserve a seat next to the aisle.

### **Blind & Partially Sighted Visitors**

#### **Audio Description Tours**

We provide two free, guided audio description tours of exhibitions for blind and partially sighted visitors every season.

Informal introductions and tours can be given to blind and partially sighted visitors. These must be booked in advance.

To book a free place, please email [access@whitechapelgallery.org](mailto:access@whitechapelgallery.org) or call +44 (0)20 7522 7888.

#### **Large Print**

Large print information about exhibitions, events and facilities can be collected from the Information Desk and cloakroom. Large print exhibition labels and interpretation texts are kept with gallery assistants.

Downloadable versions are also available.



## Current Exhibitions:

Gallery 1, 8 & 9 – The London Open 2022

Gallery 2 – Emma Talbot: The Age/L'Età

Gallery 4 – Galleries in the Groove Three Visionary Dealers 1960-80s

Galleries 5 & 6 – Tracing Absence

Gallery 7 – The Unseen Selected by Hurvin Anderson

For alternative formats

please email [access@whitechapelgallery.org](mailto:access@whitechapelgallery.org)

## Deaf Messaging Service (DMS)

The gallery uses the DMS to alert users by text message when the fire alarm sounds. Users who wish to use the system should text 'wghfas' to **078600 35999**. To leave the system, please text **STOP wghfas** to the same number.

## British Sign Language (BSL) and hearing induction loops

The Zilkha Auditorium, Study Studio and Creative Studios are equipped with induction loops.

Transcripts can be prepared for some film content. Please contact the Information Desk in advance on 020 7522 7888 or email [infodesk@whitechapelgallery.org](mailto:infodesk@whitechapelgallery.org)

## BSL Tours

Free, guided BSL tours of exhibitions are available each season.

To book a free place, please email [access@whitechapelgallery.org](mailto:access@whitechapelgallery.org) or call +44 (0)20 7522 7888. To keep up to date with our Audio Description tours and BSL tours please sign up to the Whitechapel Gallery newsletter

on the bottom right of this page and select “British Sign Language and Audio Description”

## **Subtitles and transcripts**

Transcripts are available for selected exhibitions. Please contact the Information Desk in advance on 020 7522 7888 or email [info@whitechapelgallery.org](mailto:info@whitechapelgallery.org)

## **6 – Safety Measures**

### **PPE in the gallery:**

1. All staff and visitors are encouraged to wear PPE in the gallery. Face coverings will also be made available on arrival.
2. Hand sanitizing stations are positioned throughout the Gallery.

### **Physical Adaptations:**

1. We are limiting staff in public areas and office spaces.
2. We are limiting capacities in each gallery space.
3. We advise that for those who consider themselves at greater risk please visit the gallery during our quieter days, from 12pm – 1pm on Tuesdays and 4pm-5pm on Sundays.
4. We encourage social distancing among visitors.
5. We are limiting the number of people using the lift at one time.
6. There is currently one sole entrance and one exit to the Gallery to facilitate social distancing in the Foyer.

## **Administrative Controls:**

1. New capacity charts based on public health guidelines with regards to social distancing have been generated to define new capacity levels.
2. If you or a member of your household have symptoms of coronavirus including a new, persistent cough, a fever and loss or change to your sense of smell or taste, we kindly ask you to not visit the gallery or re-book your visit.
3. We have increased the frequency of cleaning in the Gallery.
4. Anti-viral products and hand sanitizer dispensers are stationed throughout the Gallery.

## **7 – Venue Access**

### **Passenger Lift**

All levels are lift-accessible

Situated in the Foyer opposite the Cloakroom and serves the following areas:

Level -1 for the baby change and public facilities

Level 0 for Information Desk, Cloakroom, Bookshop, Townsend Restaurant, the Zilkha Auditorium and Galleries 1 & 2.

Level 1A for Gallery 4 & Reading Room

Level 1B for Galleries 5, 6 & 7

Level 1C for Galleries 8 & 9  
Level 2 and 3 are for access to our Education Studios for group visits, events and workshops.

Access to these floors is staff-operated and will be provided for events and workshop.

## **8 – Evaluation and feedback**

We welcome your feedback about your visit.

During your visit, Gallery Ambassadors will be around the gallery and are happy to receive your feedback. Alternatively, feedback forms are available at the Cloakroom and Info Desk.

You can also give feedback in written form and send this to:  
[infodesk@whitechapelgallery.org](mailto:infodesk@whitechapelgallery.org)