

Whitechapel Gallery Ten Years of Transformation 2009 – 2019



Message from the Director

One of my first responsibilities on becoming Director of the Whitechapel Gallery in 2001 was to confirm the purchase of the grand Victorian Passmore Edwards Library, adjacent to the Gallery's own 1901 Arts & Crafts building. We asked ourselves, how should we expand our physical footprint while saving a heritage building? And, what could this marvelous sequence of spaces contribute to the experience of art? All the while we needed to remain faithful to our founding mission of sharing great art with everyone.

In 2009 – after eight years of planning, hundreds of meetings, millions of pounds raised and the *sturm und drang* of the construction itself – Whitechapel Gallery opened its new space. Designed by Flemish architects Robbrecht and Daem the dramatically expanded building also inaugurated a new chapter in the story of the Whitechapel Gallery. The decade that has passed since those whirlwind opening weeks has been one of conversation and partnership; of the local and the global; and of experimentation and innovation. The success of the past ten years is a cause for celebration and a source of inspiration as we forge ahead in our role as an international epicentre for the dissemination of art, culture and creativity.

The extraordinary figures and images in the following pages are a testament to the collective accomplishments of the past decade. However, none of these would have been achieved without the individual efforts of so many. It has been a privilege to work with so many great artists, curators, critics, collectors, scholars, gallerists, educationalists, supporters, colleagues and of course visitors, all of whom have joined us in our curatorial adventure.

Our Trustees join me in acknowledging all those who have left their indelible mark on Whitechapel Gallery's past decade. We invite you to help us forge the exciting times that no doubt lie ahead.

Iwona Blazwick OBE
Director, Whitechapel Gallery





1



2



3



4

- 1 Alice Neel, *The De Vegh Twins*, 1975
Private collection, Washington, D.C.
- 2 *The Bloomberg Commission*: Giuseppe Penone
Spazio di Luce, Whitechapel Gallery, Installation View
Photo: David Parry / PA Wire
- 3 Crowds outside Whitechapel Gallery for *Nocturnal Creatures* 2018.
Photo: Ray Tang © Whitechapel Gallery
- 4 *D. Daskalopoulos Collection: Keeping it Real, Act 3*
Mona Hatoum, *Current Disturbance*, 1996 (detail)
©Mona Hatoum. Courtesy White Cube, London and
Alexander and Bonin, New York. Photo: Ben Blackwell

5 Thomas Struth, *Pantheon*, Rome, 1990
© 2011 Thomas Struth

6 Helen Cammock, *Che Si Puo Fare*, Performance, 2019
Photo: Dan Weill © Whitechapel Gallery

7 Paloma Varga Weisz, *Bumped Body*, 2007
Paloma Varga Weisz © DACS 2018

8 Mark Dion stands in *The Library for the Birds of London*, 2018, Photo: Jeff Spicer / PA Wire



5



6



7



8

5

Artists

Artists are at the heart of Whitechapel Gallery. Throughout our history we have offered solo premieres to artists from around the globe. Artists in the capital receive the opportunity to show on an international stage in our triennial exhibition *The London Open*, while our international outlook and global partnerships have enabled us to present artists from six continents in the past decade. We have advocated for artists working in all media, from painting to performance, from the moving image to the environmental.

Surveys and commissions of major living artists over the past decade include: Leonor Antunes, Kader Attia, Zarina Bhimji, Mel Bochner, Sophie Calle, Mark Dion, Inci Eviner, Paul Graham, Isa Genzken, Guerrilla Girls, Mary Heilmann, Emily Jacir, Mikhail Karikis, William Kentridge, Peter Liversidge, Sarah Lucas, Goshka Macuga, Anna Maria Maiolino, Rivane Neuenschwander, Katja Novitskova, Giuseppe Penone, Laure Prouvost, Walid Raad, Michael Rakowitz, Eva Rothschild, Thomas Ruff, Thomas Struth, Richard Tuttle, Gillian Wearing, Rachel Whiteread and Christopher Williams.

Retrospectives of historic figures have included Harun Farocki, Hannah Hoch, Chris Marker, Alice Neel and Eduardo Paolozzi. Thematic shows have celebrated modern art from South Asia and the Arab world as well as Eastern Europe and the Americas.

Public and private collections presented to London audiences for the first time have hailed from Greece, Italy, the Middle East, Russia, Spain and the UK.

1,100+ artists

450+ women artists

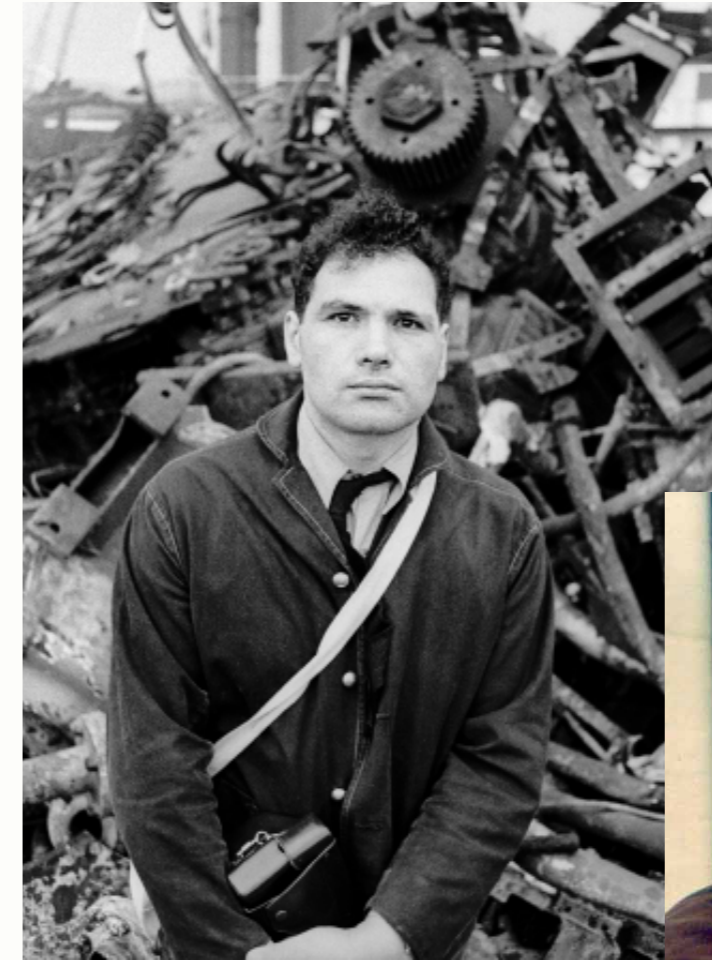
Artists from 80+ countries

from Afghanistan to Zambia

100+ London artists in

3 editions of *The London Open*

6 Art Icons



Eduardo Paolozzi at the Shipbreakers' Yard, Hamburg, c.1962. Photo: Ulrich Mack, © Ulrich Mack



Sarah Lucas, *Self-Portrait with Skull*, 1996
Copyright the artist, courtesy Sadie Coles HQ, London



Guerrilla Girls Commission: *Is it even worse in Europe?*, 2016, Photo: David Parry / PA Wire

Curatorial Adventures

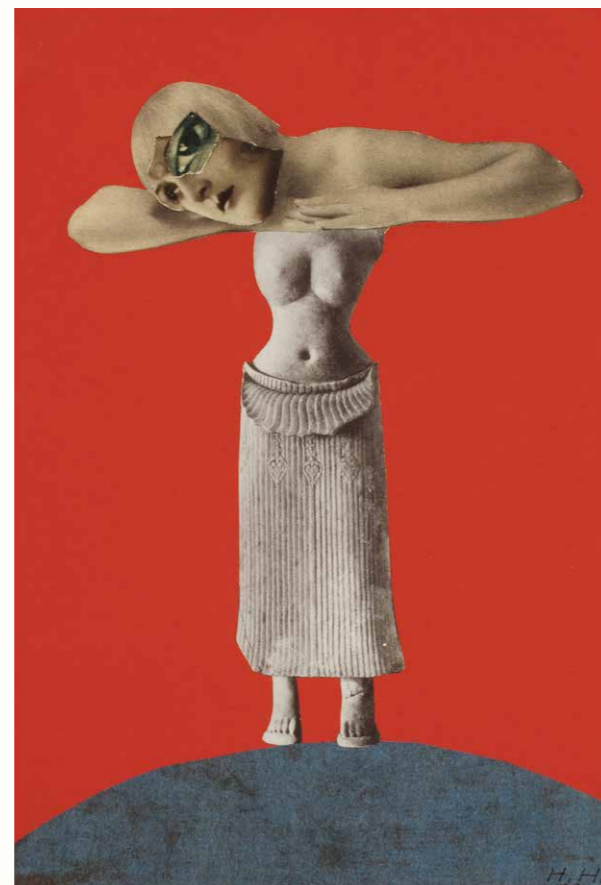
From the beginning, Whitechapel Gallery has been at the vanguard of exhibition making. In the past ten years since our expansion, our diverse gallery spaces host up to six exhibitions at a time, which embrace innovative ways of displaying and discussing art. At once rigorous and experimental, the Gallery's curators have pioneered new models of exhibition-making that have been emulated worldwide – from rethinking the past in our Archive Gallery; to opening up important rarely-seen holdings in our Collections Gallery; to displaying the outputs of our Education and Public Programme initiatives in our Project Galleries; to bringing important new works of art to fruition through commissions around the institution and beyond our walls.

“Whatever you see in this gallery always feels like an intimate discovery”

Laura Cumming, *The Observer*



William Kentridge, *The Refusal of Time*, 2012, with collaboration of Philip Miller, Catherine Meyburgh and Peter Gallison. Installation view at Whitechapel Gallery, 2016
Photo: Stephen White



Hannah Höch, *Ohne Titel (Aus einem ethnographischen Museum)*
(*Untitled [From an Ethnographic Museum]*), 1930
Museum für Kunst und Gewerbe, Hamburg. Photo: courtesy of Maria Thrun

217 world-class exhibitions

205 free exhibitions

10 free offsite exhibitions

29 UK solo premieres

37 collection displays

31 moving image exhibitions

24 pioneering archive exhibitions

10 influential survey exhibitions

130+ artist films shared globally

through Artists' Film International

100+ artist commissions

10 children's commissions

17 performance commissions

6 Max Mara Art Prize for Women
awards and exhibitions

9 artist and writer residencies

Audience Engagement

With annual attendance growing by 300% over the past decade, Whitechapel Gallery's audiences are continually diversifying and expanding locally, nationally and internationally.

New and loyal visitors come to the Gallery to be intellectually stimulated, to spend time with friends and family and to be inspired. There is something for everyone; from art students to families, and schools to tourists exploring the heart of London's East End. The appetite among our online audiences also continues to thrive, as new followers join us every day to ensure that they are the first to find out about our exhibitions, events and late night live programmes.

"There is no better, sharper or more accessible gallery in the city"

Edwin Heathcote, *The Financial Times*



Melanie Manchot, Performance in Exchange Square for Art Night 2017



The London Art Book Fair 2018, Photo: Dan Weill © Whitechapel Gallery

300% growth in annual attendance
82,000 visitors to late-night festivals
73,780 London Art Book Fair visitors

500m+ annual media reach
1,000,000+ collective social media followers



Larry Achiampong and Shiraz Bayjoo perform at Nocturnal Creatures 2018, Photo: Ray Tang © Whitechapel Gallery

Big Ideas, Public Debate, Education and Outreach

From conferences on creativity and the rural to 'the electronic super highway', public programmes introduce audiences to the big ideas of our time. Communities ranging from 15 year old rappers to Bangladeshi seamstresses all participate in interpreting art – and creating it. Groups work with artists to harness their creativity in multiple ways. The award winning results are given a platform in the Outset and Zabludowicz Galleries. As we enter what has been called the fourth industrial age, invention and creativity are the most valuable qualifications the Whitechapel Gallery can gift to children and young people. Our education programmes open doors of perception and opportunity.

“Everything feels vital, and everywhere there are surprises”

Adrian Searle, *The Guardian*



Creative Learning Programme. Photo: Rob Harris

- 60,000+ attendees to public programme events
- 8,400+ Family Day participants
- 950+ Crib Notes event visitors
- 51,500+ students in 1,400+ school visits
- 35,000+ students in 1,500+ college and university groups
- 3,500+ local participants in community workshops and events
- 1,500+ visitors to British Sign Language and Audio Description Tours
- 10,000+ 15–21 year olds to Boot Camps, masterclasses, creative career sessions and city-wide collaborations
- 300+ young people engaged in the Duchamp & Sons Youth Forum

Thank you

As an educational charity, Whitechapel Gallery's success over the past ten years could not have been possible without the generosity of thousands of individuals, corporate supporters, trusts and foundations and statutory funders.

We are proud to be a National Portfolio Organisation of Arts Council England, and are hugely grateful for their ongoing investment in the Gallery.

Our heartfelt thanks go to our loyal patrons, members and regular donors, as well as all those who have supported our exhibitions, education projects and public programmes, for enabling us to realise the remarkable achievements of the past decade.

Finally, we wish to acknowledge the following capital supporters whose core support at key moments has played a transformational role in this most recent chapter of our history:

Trusts & Foundations, Companies and Statutory Bodies

Heritage Lottery Fund
London Borough of Tower Hamlets
European Regional Development Fund
London Development Agency
Cityside Regeneration
English Heritage

Clore Duffield Foundation
The Foyle Foundation
The Garfield Weston Foundation
The Kresge Foundation

City Bridge Trust
The Mercers' Company
Stavros Niarchos Foundation

The 29th May 1961 Charitable Trust
The Alan Evans Memorial Trust
The Annenberg Foundation
Artek
The Assembly
Cale Associates
Canada House Arts Trust
CHK Charities Limited
The Clothworkers' Foundation
The Eranda Foundation
Fundación Almine y Bernard Ruiz-Picasso para el Arte
The Goldsmiths' Company Charity
The Headley Trust
Heritage of London Trust
The Idlewild Trust
John Kobal Foundation
Kvadrat
The Kirby Laing Foundation
MLA London

The Monument Trust
The Oppenheimer Charitable Trust
The Paul Mellon Centre for Studies in British Art
The Pilgrim Trust
R and S Cohen Foundation
The Rayne Foundation
The Reed Foundation
The Trusthouse Charitable Foundation
The Vivienne and Sam Cohen Charitable Trust
The Wolfson Foundation
The Worshipful Company of Merchant Taylors

and those that wish to remain anonymous

Collectors' Circle

Maryam & Edward Eisler
Jack Kirkland
Bina & Philippe von Stauffenberg
Charles Asprey

and those that wish to remain anonymous

Named Galleries and Spaces

Clore Creative Studios supported by the Clore Duffield Foundation
Foyle Reading Room supported by The Foyle Foundation
Zilkha Auditorium supported by Nina and Michael Zilkha

Pat Matthews Gallery supported by David Matthews

Outset Project Gallery supported by Outset Contemporary Art Fund

Victor Petitgas Gallery supported by Catherine and Franck Petitgas

176/Zabludowicz Collection Project Gallery supported by Anita and Poju Zabludowicz

Library Dining Room supported by Robert Taylor and Michael Kallenbach

Tom Bendham Gallery supported by the Tom Bendhem Estate

Whitechapel Project Founding Partners

Brian Boylan
Antje & Andrew Geczy
The Glass-House Trust
Peter & Maria Kellner
Richard & Janeen Haythornthwaite
Brian & Lesley Knox
Keir McGuidness
Dasha Shenkman
Tishman Speyer Properties

Future Fund Founding Partners

Mahera and Mohammad Abu Ghazaleh
Sirine and Ahmad Abu Ghazaleh
Arts Council England Catalyse Endowment Fund
Swantje Conrad
Dimitris Daskalopoulos
Maryam and Edward Eisler
NEON
Sir Siegmund Warburg's Voluntary Settlement
V-A-C Foundation

Collection Partners

Barjeel Foundation
British Council Collection
"la Caixa" Foundation
Contemporary Art Society
D. Daskalopoulos
George Loudon
Government Art Collection
ISelf Collection
National Museum of Women in the Arts
Fondazione Sandretto Re Rebaudengo
V-A-C Foundation

To find out more about how you can support Whitechapel Gallery's future, please contact:

The Whitechapel Gallery Development Team
supporters@whitechapelgallery.org
+44 (0)20 7539 3358

Whitechapel Gallery is a registered charity no 312612



Supported using public funding by
ARTS COUNCIL ENGLAND



Whitechapel Gallery



WHITECHAPEL ART GALLERY